

Population

This chapter provides an analysis of current and projected populations within the Town of Enfield, Connecticut. A review of current population trends is invaluable to understanding how the community is structured and determining whether the level of services offered is sufficient. It can also act as a benchmark when evaluating the effectiveness of plan implementation, or simply to see how the community has changed since the plan was drafted. Existing population projections are helpful to prepare for future needs; but they can also help to get a better sense of the factors that have greater or lesser influence over the community's population changes.

For comparative purposes, the chapter also presents demographic data about the Capitol Region, Hartford County and the State of Connecticut. Often, the changes experienced by communities that are located on the fringe or in the middle of larger metropolitan areas, as is Enfield, are much more influenced by regional conditions. Knowing how Enfield is affected by what is happening in the region can help it understand the role, importance and limitations of the services offered to residents of the town and its extended community.

Ultimately, the information presented in this chapter will assist the Town of Enfield to manage future growth in a manner that is consistent with local, regional and statewide goals.

Population Characteristics

Total Population

Enfield is part of the Hartford Metropolitan Statistical Area (MSA), which is an area that had a population of 1,183,110 in 2000. Enfield's population was 45,212 in 2000, which represented 3.8% of the Hartford MSA population. Enfield's estimated population for the period between 2005 and 2007 was 46,422. This was a 2.6% increase in population since 2000.

Table 5 shows the total population and the percentage change in total population since 1950. Over the past five decades, Enfield's population increased by 29,748, which is 192% more than the population in 1950. Most of this population growth occurred during the 1950s and 60s. After 1970, growth occurred at a much slower rate. There were even several periods during which the town's population declined.

	1950	1960	1970	1980	1990	2000	2005-2007 Population Estimate
Total Population	15,464	31,464	46,189	42,695	45,532	45,212	46,422
Growth Rate		103.5 %	46.8 %	-7.6 %	6.6 %	-0.7 %	2.6 %

Source: Capitol Region Council of Governments. "Appendix 12: Total Population, 1950-2000." Trends Shaping Our Region: A Census Data Profile of Connecticut's Capitol Region. January 2003; US Census Bureau. B01003. Total Population. 2005-2007 ACS 3-Year Estimates.

The small fluctuations in population since 2000 suggest that the town’s population is stable. This idea is supported by the town’s age distribution, and its birth, death and migration statistics, which are discussed later in this chapter.

Natural Increase

Natural increase is the difference between the number of births and deaths in a population. It is used to get a better understanding of the factors that contribute to population change because it shows the net number of new individuals in a community, excluding those that migrated to the community.

The State of Connecticut documents the number of births and deaths among Enfield residents. Since 2000, the difference in the number of births and deaths in Enfield has been very small from year to year. The number of deaths has been very close to the number of births, demonstrating that natural increase currently has a negligible effect on Enfield’s population growth.

Table 6 shows the natural increase in 2000 and 2006, and the percentage of the population represented by net new individuals. Enfield’s natural increase is dramatically different to what occurred at the county and state levels in 2000 and 2006. At both the county and state levels, the number of births and deaths were less each year, but births outnumbered the amount of deaths. As a result, natural increase contributed more to population growth in Hartford County and in Connecticut as a whole.

Table 6 Comparison of Natural Increase Statistics						
Year	Enfield		Hartford County		State of Connecticut	
	Natural Increase	Percent of Population (%)	Natural Increase	Percent of Population (%)	Natural Increase	Percent of Population (%)
2000	106	0.23	2,631	5.81	12,935	28.60
2006	64	0.13	2,596	5.59	12,633	27.21

Source: Connecticut Dept. of Health. Table 2A. Population, Births, Deaths, Fetal Deaths, Infant Deaths by Place of Occurrence and Residence and Marriages by Place of Occurrence. Vital Statistics (Registration Reports). 2000 and 2006.

Migration

The US Census Bureau determined how many people lived in a different house five years prior to conducting the 2000 Census; and how many lived in a different house one year prior to conducting the 2005-2007 American Community Survey (ACS). This data is used (1) to determine how much the population increased due to migration, and (2) to examine how the population redistributes itself throughout various geographic areas. There are two limitations with this data. One is that migration statistics between the 2000 Census and the 2005-2007 ACS are not comparable due to the different intervals of change in residence measured. The second is that internal mobility within Enfield cannot be distinguished from migration to Enfield because the 2000 Census does not show how many individuals changed residence within the same city or town. Notwithstanding, this information will help compare the role of migration in Enfield to that of natural increase as a factor in the town’s population growth trends.

A total of 15,583 Enfield residents (36% of the total population) lived in a different house five years prior to the 2000 Census. The 2005-2007 ACS revealed that approximately 6,969 Enfield

residents (15% of the total population) lived in a different house one year prior to the survey. At the MSA level, 462,438 individuals (41% of the total population) lived in a different house in 1995. The 2007 ACS showed that in 2006, 152,706 people (12% of the total population) lived outside the West H.-East H.-Hartford Metro Area. These statistics show that the proportion of newcomers in Enfield and the MSA was similar. Comparing these figures to the natural increase demonstrates that migration has had a greater impact in population changes in both Enfield and the Hartford area as a whole.

Table 7 shows from where people moved to Enfield. Slightly more than half of all people who moved to Enfield already lived within Hartford County.

Table 7 Migration Statistics				
Previous location	Percent of Population that Lived in a Different House (%)			
	Town of Enfield		Hartford MSA	East H. - West H. - Hartford Metro Area
	2000	2005-2007 Estimate	2000	2007 Estimate
Within Hartford County / Same county	59.91	68.76	59.49	62.58
Another county within the state	18.31	16.54	17.47	18.60
Another state	18.72	13.53	15.99	15.54
Puerto Rico	0.34	0	1.54	0.42
A foreign country	2.69	1.16	5.48	2.84

Source: US Census Bureau. P24. Residence in 1995 for the Population 5 Years and Over- State and County Level. Census 2000 Summary File 3 Sample Data; C07204. Geographical Mobility in the Past Year for Current Residence-State, County and Place Level in the United States for the Population 1 Year and Over. 2005-2007 ACS 3-Year Estimates; B07204. Geographical Mobility in the Past Year for Current Residence-State, County and Place Level in the United States for the Population 1 Year and Over. 2005-2007 ACS 1-Year Estimates.

Population Density

Within Connecticut’s Capitol Region, Enfield is considered a “Fully Suburban” community. Fully Suburban communities have between 1,251 to 3,000 persons per square mile. This is consistent with population density in 2000 as shown on Table 8. Table 8 also shows that population density in the Town of Enfield has been increasing over time.

Table 8 Population Density Changes in Enfield, CT from 1970 to 2000						
	1950	1960	1970	1980	1990	2000
Total Population Density per Sq. Mi.	463	941	1,382	1,277	1,362	1,352
Percent Change		103.5 %	46.8 %	-7.6 %	6.6 %	-0.7 %

Note: Enfield’s total area was based on 33 Sq. Mi.

Source: Capitol Region Council of Governments. “Appendix 14: Population Density Per Square Mile, 1970-2000.” Trends Shaping Our Region: A Census Data Profile of Connecticut’s Capitol Region. January 2003.

Figure 16 illustrates how population density varies within the Town. The density units shown are persons per acre and the geographic unit used to determine density was the census tract, which was the smallest geographic unit used by the Census Bureau for Enfield in 2000. Population density in the Town of Enfield is relatively low, but there is a greater concentration of people north and west of the I-91 interchange.

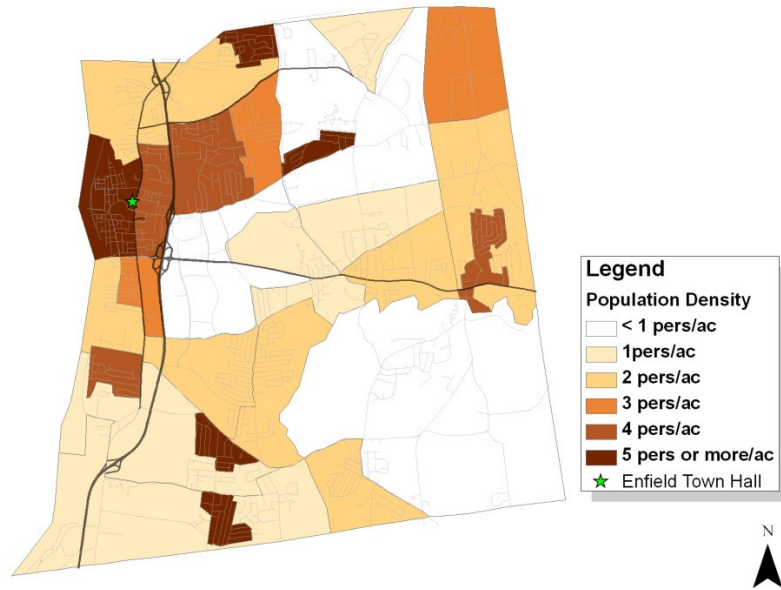


Figure 16 Population Density by 2000 Census Tract

Age

Enfield’s population was distributed fairly equally across age groups in 2000 and 2005-2007, as shown on Table 9. This distribution resembles the pattern observed for the Hartford MSA and Metro Area. Table 9 also shows that the proportion of individuals in Enfield between the ages of 18 and 49 decreased from 2000 to 2005-2007. During that same period, the proportion of individuals in Enfield that are 50 years and older increased.

Table 9 Comparison of Age Distribution				
Age Group	Percent of Total Population (%)			
	Enfield		Hartford MSA	East H. - West H. - Hartford Metro Area
	2000	2005-2007 Estimate	2000	2007 Estimate
Under 18	22.6	23.03	24.32	22.68
18 to 34	22.7	20.71	21.65	21.38
35 to 49	25.8	24.73	24.67	23.02
50 to 64	15.1	16.37	15.67	19.25
65 +	13.7	15.14	13.68	13.65

Source: US Census Bureau. P12. Sex by Age. Census 2000 Summary File 1 100-Percent Data; B01001. Sex by Age. 2005-2007 ACS 3-Year Estimates; B01001. Sex by Age. Total Population. 2007 ACS 1-Year Estimates.

Race/Ethnicity

While Enfield's population includes individuals from several racial or ethnic groups, the majority of town residents are identified as White. This contrasts greatly with the Capitol Region, where the minority population in 2000 was 27.5%.² In 2005-2007, the proportion of minorities in Enfield increased to 14.87%, with the Hispanic population showing the greatest increase.

Table 10 Race/Ethnicity in 2000				
Racial/Ethnic Category	Percent of Total Population (%)			
	Enfield		Hartford MSA	East H. - West H. - Hartford Metro Area
	2000	2005-2007 Estimates	2000	2007 Estimate
White	88.32	85.09	77.33	74.40
Black	5.27	5.61	8.83	9.53
Asian	1.32	1.46	2.25	3.20
Native American	0.17	0.18	0.18	0.17
Hispanic	3.74	6.62	9.59	10.87
Other	1.19	1	1.79	1.80
Note: "Native American" combines "American Indian and Alaska Native alone", and "Native Hawaiian and Other Pacific Islanders" classifications; "Other" combines "Some other race alone", and "Population of two or more races" classifications.				
Source: US Census Bureau. P4. Hispanic or Latino, and Not Hispanic or Latino by Race. Census 2000 Summary File 1 100-Percent Data.				

Population Projections through 2020

Enfield's population has remained stable in recent years, and it is expected to continue to grow slowly in the next 10 years. The population projections shown in Table 11 indicate one percent growth every five years. If the projection for 2010 holds true, the growth rate from 2007 to 2010, which would be approximately 1%, would be consistent with the growth patterns of the past. (See Table 5)

These projections, however, are based on the total population and rate of growth in 1990. While the population in 2007 (46,422) has not yet surpassed the projection for 2010 (and therefore does not appear to invalidate these projections), certain factors may have changed since 1990 that could result in different population trends.

² Capitol Region Council of Governments. Appendix 9: Estimated Minority Population Share of Capitol Region Population Growth, 1990 to 2000. Trends Shaping Our Region: A Census Data Profile of Connecticut's Capitol Region. January 2003.

Table 11 Population Projections for Enfield

Town	Base Year	Projections					
	1990	1995	2000	2005	2010	2015	2020
Enfield	45,532	45,680	45,750	46,220	46,880	47,390	47,830
State Total	3,287,116	3,289,090	3,316,120	3,364,080	3,435,400	3,512,240	3,593,860

Note: Projections based on 1990 population and growth rate.

Source: State of Connecticut, Office of Policy and Management. Connecticut Population Projections, Series 95.1: Population Projections for Connecticut and its Municipalities. Retrieved on December 29, 2008 from: <http://www.ct.gov/opm/cwp/view.asp?a=2993&q=383326>

Findings

- The demographic data available for Enfield suggests that its population is stable, but vulnerable to population loss. Historic data shows that population growth has occurred very slowly in recent decades, and current data shows an age distribution that reflects a steady replacement of individuals across all age groups. However, current birth and migration data suggest a trend of population decline. If everything stays the same, the population may remain stable; however, dramatic changes in economic conditions, for example, might exacerbate population loss.
- Population growth in Enfield has been mostly the result of an influx of people from other parts of the Hartford area.
- Enfield's population changes have mirrored those occurring at the regional level.
- Population density in Enfield is greatest near the Thompsonville area, but the density is still relatively low at 5 persons per acre.
- Enfield's population can be generally described as racially homogenous. Black and Hispanic are the main minority groups represented within the community.
- Existing population projections for the Town of Enfield are based on very old data, which dates from 1990. New population projections using a more recent base year are needed to help the community plan ahead for its future with more accuracy.
- The upcoming 2010 US Census will provide much needed up-to-date demographic data for all communities across the nation. After 2010, the US Census Bureau will also have enough data to begin providing population estimates between decennial censuses for smaller communities like Enfield. Unfortunately, the current POCD revision schedule occurs just one year before the decennial census. Dramatic population changes revealed by the census so soon after the POCD update could quickly show the Plan to be out of touch with current trends.